



**SOFT GEL**  
TECHNOLOGIES, INC

The highest level of technical excellence  
in soft gelatin capsule production



Our highly-trained chemists and technicians create an environment of product integrity with complete confidentiality and full compliance with State and Federal regulations.



Quality is constantly monitored during every step of the manufacturing process to achieve the highest level of technical excellence in soft gelatin capsule production.



All supplements offered by SGTI meet stringent state and federal regulations (current GMP) for the manufacture of dietary supplements, thereby ensuring purity, potency, and quality.

## Product List

# Full-Service Contract Manufacturer

## YOUR IDEAL SOLUTIONS PROVIDER

Soft Gel Technologies, Inc.® (SGTI) is a full-service contract manufacturer, specializing in the production and marketing of premium quality branded softgel products and turnkey custom softgel formulations. When you partner with us, you'll find that effective communication is a big factor in developing a successful working relationship with our customers. A great deal of time is spent understanding what key factors are most important to a prospective customer. We have a skilled and experienced staff, which promotes a better understanding of a customer's expectations.



## CUSTOMER CARE SHAPES EVERY DEPARTMENT

- ✓ We are committed to giving our B-to-B customers the highest levels of service and support.
- ✓ We practice a transparent business model, and encourage customer audits.
- ✓ We assist with all documentation requests, registration processes, and any regulatory requirements.
- ✓ We provide a full range of product development and marketing services.
- ✓ We specialize in creating unique, high-value supplements.
- ✓ We focus on ingredients that are difficult to encapsulate, fragile to work with, or difficult to absorb.
- ✓ We offer numerous exclusive ingredients for softgel applications, many of which are patent-protected.
- ✓ We develop new technologies that enhance nutrient bioavailability and functionality over traditional delivery systems.
- ✓ We invest in clinical research for several of our exclusive products.
- ✓ We have a diverse line of bulk stock products, which are available as smaller minimum order quantities.
- ✓ We have an extensive analytical laboratory on site, and regional sales offices throughout the US and internationally.

## OUR SOLVENT-FREE MANUFACTURING PLANT



All supplements offered by SGTI meet stringent state and federal regulations (current Good Manufacturing Practices) for the manufacture of dietary supplements, thereby ensuring purity, potency, and quality. We have invested millions of dollars to purchase precision equipment, which enables us to consistently manufacture the finest softgels for our customers. Our state-of-the-art blending and encapsulation equipment is of the highest standard in technology and design. We have automated many of the inspection and packaging processes with precision equipment designed to FDA 21 CFR (Code of Federal Regulations) Part 111 requirements, which helps increase throughput.

The manufacturing process of making high-quality softgel capsules implicates the use of sophisticated technology and requires highly trained, competent machine operators. During the rotary die process, the gelatin temperature, ribbon thickness, seam width, and fill quantity all need to be monitored and controlled. It involves high precision and requires constant oversight.

It is our responsibility as a supplement manufacturer to ensure that our products contain the intended ingredients and are absent of contaminants. We achieve these through a combination of extensive testing, thorough supplier qualification, and ingredient traceability.

## IN-HOUSE ANALYTICAL LABORATORY

One of our strongest company attributes is our well-equipped, state-of-the-art, chemical analytical laboratory and the staff who run it. Highly-trained chemists and technicians create an environment of product integrity with complete confidentiality and full compliance with State and Federal regulations. All work performed in our lab facility is in accordance with current Good Laboratory Practices (cGLPs). Our sophisticated laboratory instruments exceed industry standards, are subjected to annual Operational Qualification/Performance Verification, and are 21 CFR Part 11 compliant.

Quality Control (QC) provides testing through all stages of production, from incoming raw material testing and identification, in-process quality checks, and final product testing for potency and quality of the products we manufacture. QC uses state-of-the-art instruments such as:

- ✓ High Performance Liquid Chromatography (HPLC)
- ✓ Gas Chromatography (GC)
- ✓ Atomic Absorption (AA)

We use independent third-party testing laboratories since they offer unbiased analytical testing to support the quality of our products and meet customer requirements. These labs are an extension of our in-house laboratory. We qualify each of our third-party labs by verifying their data is technically sound, ISO/IEC 17025 accredited, and cGMP and GLP compliant.

When you partner with us, we can assist with real-time stability data. Stability testing is performed to support the shelf life of the finished product and provides information as to how the quality of the product changes with time. Each study is conducted under the recommended storage conditions referenced on the product label. The testing covers—as appropriate—the physical, chemical, biological, and microbiological attributes.

## CORPORATE CONSERVATION

We are guided by our ethical standards to be good corporate citizens, which includes considering the environmental impact of our operations. We are committed to protecting the community in which we operate.



### DID YOU KNOW?

We are reducing our environmental footprint by producing our own energy using clean-burning natural gas. We use a 260-kilowatt cogeneration machine that generates electricity, which supplies us with an uninterrupted source of power. The heat generated is used throughout the plant. The waste heat is used to make steam, hot water, or chilled water for process heating, cooling or air conditioning.

We converted to LED lighting and installed motion detectors, which cut our power consumption by 50%.



## QUALITY CERTIFICATIONS

Quality is constantly monitored during every step of the manufacturing process to achieve the highest level of technical excellence in soft gelatin capsule production. Record keeping and documentation are crucial components to ensure GMP compliance and continued certification. We maintain complete and detailed batch records for traceability purposes. We have obtained Good Manufacturing Practices (GMP) registration through the following organizations:

The NSF Certified for Sport™ program is a specialized GMP program for manufacturing facilities that make products for the sports nutrition industry. Registration demonstrates compliance with GMPs along with conformance to the additional requirements set forth for traceability and laboratory operations. NSF conducts annual audits and periodically retests each dietary supplement product to ensure continued compliance against the toughest testing standard in existence today.



# Branded Products: Features and Benefits

*We can help with new product ideas and development.*



## BRANDED PRODUCTS

Since our company's inception, we have built a collection of branded products, and we continue to add new items. The decision to brand a formula is a calculated one. We consider a supplement's safety and efficacy, supporting clinical studies, and points of differentiation before adding it to our portfolio of brands.

In addition, we align ourselves with respected raw material suppliers, who also invest in their brands and the science supporting their products. Our customers can be guaranteed that we support each of our branded supplements with extensive advertising campaigns, clinical research, educational outreach, and our company's dedication to its success. Several of our branded product formulations have been granted U.S. patents, most of which are for significant technological breakthroughs in the area of nutrient bioavailability. Patents bring unique value and distinction to our brands.

## SYNERGISTIC SISTER COMPANY

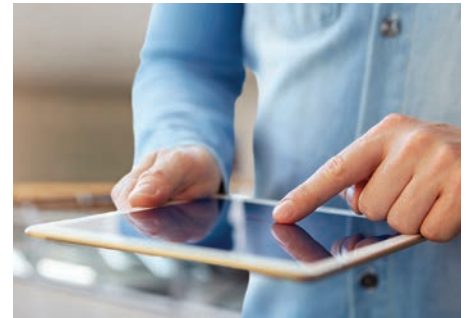
*Need a hard to find raw material? We can help!*



SGTI has access to a portfolio of unique ingredients from around the globe. We have a strong network of ingredient suppliers, which enables us to offer faster turnaround times for formulation quotes and finished goods, and can often help us to obtain better pricing for our customers.

Our sister company, Kenko International, Inc., was founded in 1989. Kenko is a unique supplier with extensive global resources when it comes to specialty chemicals and raw materials.

By utilizing the professional relationships Kenko has established, it has access to a worldwide network for procuring high quality active and functional ingredients. It is strategically positioned to offer reliable service and efficient distribution of products to customers in the food, beverage, pharmaceutical, and dietary supplement industries. The purified, extracted active constituents in its herbal raw materials are standardized, and each batch comes with a certificate of analysis. The raw materials it provides can be used for softgel encapsulation or other forms of delivery.



## SOCIAL MEDIA AND INTERNET ACCESS

*Brochures and marketing support available 24/7.*

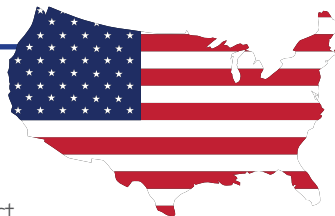
We are committed to helping customers effectively communicate the benefits of our products and be a reputable source of information. Our technical staff strives to educate our customers through our informative and visually-appealing brochures. We understand that innovative products don't sell on their own without substantiation. The science and research behind each formulation is highlighted in our professional pieces.

By visiting our website, you'll have 24-hour access to our brochures to assist you in your marketing efforts.

[www.soft-gel.com](http://www.soft-gel.com)

## MADE IN THE USA ★★★★★

*Manufacturing only done in Los Angeles, CA.*



For more than two decades, SGTI has provided contract manufacturing of soft gelatin capsules exclusively for the dietary supplement industry. Our corporate headquarters and manufacturing facilities are located in Los Angeles, California, where our state-of-the-art equipment, professional and well-trained personnel, and exceptional customer service are at your disposal. We have the capacity to meet high volume demands as well as accommodate smaller jobs. You can count on us to effectively meet your encapsulation and bottling needs in a reliable manner.

## Products

Some of our exclusive branded softgel supplements include:

### Injuv®

*Beauty from within*

Injuv softgels contain a naturally-derived hyaluronic acid (HA) complex with proven bioavailability. A proprietary enzyme-cleaving technique allows it to have a low molecular weight for the highest possible absorption. HA is an essential compound for maintaining healthy skin, joints, and connective tissue.

Scan QR-code to learn more.



### CoQsol-CF®

*Solubilized CoQ<sub>10</sub> for heart health*

CoQsol-CF softgels contain a completely soluble, liquid, 100% crystal-free solution of CoQ<sub>10</sub> clinically proven to provide superior bioavailability of CoQ<sub>10</sub>. It is a unique formulation of CoQ<sub>10</sub>, d-limonene, and natural tocopherols (vitamin E). Improving dissolution enhances absorption.

Scan QR-code to learn more.



### CoQH-CF®

*Enhanced absorption ubiquinol*

CoQH-CF softgels deliver a solubilized form of Kaneka Ubiquinol™, so the body can effectively use this important antioxidant for optimum health. Using our crystal-free technology, this stabilized form of reduced CoQ<sub>10</sub> is protected from oxidation and enhances the utilization of ubiquinol.

Scan QR-code to learn more.

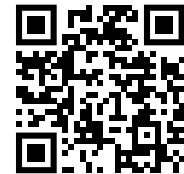


### CoQsol®

*Originally highly bioavailable CoQ<sub>10</sub>*

CoQsol is an all-natural, enhanced bioavailability softgel formulation of CoQ<sub>10</sub>. This unique, synergistic blend of CoQ<sub>10</sub>, natural vitamin E tocopherols, natural mixed carotenoids, and rice bran oil is clinically proven to provide superior absorption when compared to CoQ<sub>10</sub> powder.

Scan QR-code to learn more.



### EZ Mega 3™

*Higher potency omega-3, smaller size*

EZ Mega 3™ softgels contain a higher concentration of EPA and DHA per serving than standard fish oil capsules, and are smaller and easier to swallow. Neutral in taste and contaminant-free, these fish oil concentrate softgels provide an easy way to get omega-3 essential fatty acids.

Scan QR-code to learn more.



### GlucoHelp™

*Healthy glucose support*

GlucoHelp is a fast-acting, clinically-studied banaba leaf extract, standardized to 18% corosolic acid, for the maintenance of healthy blood glucose levels. Corosolic acid is lipophilic, and research suggests that our oil-based softgel delivery optimizes absorption. Banaba leaf extracts have a proven record of safety and efficacy.

Scan QR-code to learn more.



### Smart PS™

*Promotes mental alertness*

Smart PS softgels feature an exclusive, soy-free fluid dispersion phosphatidylserine (PS) material that has significantly enhanced stability for maximum brain benefits. PS is the only brain ingredient that was granted a qualified health claim by the FDA.

Scan QR-code to learn more.



# Softgel Shapes, Sizes and Colors



## ADVANTAGES OF SOFTGELS

The best delivery form for a product is one that is easier to swallow and absorb.

Soft gelatin capsules are a superior delivery system designed for safety and efficacy. Softgels have many desirable properties and several advantages over tablets and hard-shell capsules. They are easy to swallow, disintegrate quickly, and can significantly improve the bioavailability of active ingredients. Softgel capsules can be adapted for many specialized uses. Consumers can see that softgels are hermetically sealed, which not only protects the active ingredients in the fill material from oxidation, moisture, and microbial contamination, but also are tamper-proof. Problems with the one-piece softgels would be indicated through leakage or discoloration. This dosage form is precise and uniform, providing greater stability, purity, and consistency of the nutrients encapsulated.

Another key strength of softgels is their versatility. There are wide varieties of shell colors, shapes, and sizes available to offer product differentiation in the market. Although aesthetically-pleasing supplements appeal to the consumer eye, the inner fill of the capsule is even more important. Softgel capsules can accommodate a wide variety of compounds filled as a semi-solid, liquid, gel, or paste. Also, more emulsion and micro-encapsulated materials are being put into softgel capsules, making them more functional and giving a greater variety of choices as to availability and dosing.

### NATURAL COLOR OPTIONS

YELLOW	ORANGE	RED	LIGHT BROWN (Carob/Caramel w/TiO2)	DARK BROWN (Carob/Caramel w/TiO2)	WHITE	GREEN

### OVALS

#3	#4	#5	#6	#7.5	#10	#12

### OBLONGS

#11	#14	#16	#20	#24

Softgel sizes and colors are approximate.

## CONTRACT PACKAGING/ PRIVATE LABELING

We can help you create the perfect bottling solution for your nutraceutical product, thereby ensuring the quality of your softgels from storage to usage. Whether you specify plastic or glass bottles, blister packs, or cartons, we have the resources to help you fulfill your packaging needs.

## HDPE/PET BOTTLES

HDPE (High Density Polyethylene) and PET (Polyethylene Terephthalate) can be extruded or molded into plastic bottles and containers. These bottles are available in different sizes, to accommodate your various softgel sizes and counts. Post-consumer recycled plastic can be specified, as well as safety seals, neck bands, and child-resistant caps, to complete your turnkey order.



HDPE (High Density Polyethylene) bottles are durable plastic resistant to strong impacts.

## BOTTLE SIZES

Capsule Size	30 Capsules	60 Capsules	90 Capsules	120 Capsules	180 Capsules
2 Oval	60cc	60cc	60cc	75cc	75cc
3 Oval	60cc	60cc	60cc	75cc	100cc
4 Oval	60cc	60cc	75cc	100cc	120cc
5 Oval	60cc	60cc	75cc	100cc	150cc
6 Oval	60cc	75cc	100cc	120cc	175cc
7.5 Oval	60cc	75cc	120cc	150cc	225cc
10 Oval	60cc	100cc	150cc	175cc	275cc
12 Oval	60cc	100cc	150cc	175cc	275cc
Capsule Size	30 Capsules	60 Capsules	90 Capsules	120 Capsules	180 Capsules
8 Oblong	60cc	75cc	120cc	150cc	275cc
11 Oblong	75cc	120cc	150cc	225cc	300cc
14 Oblong	75cc	120cc	175cc	225cc	300cc
16 Oblong	75cc	120cc	175cc	225cc	300cc
16 Oblong (OF)	100cc	200cc	275cc	400cc	500cc
20 Oblong	100cc	175cc	225cc	300cc	500cc
24 Oblong	100cc	175cc	275cc	400cc	625cc
24 Oblong (OF)	120cc	225cc	300cc	400cc	625cc

For general reference only; all sizes are approximate.



## Product List

CC # Product Code	Product Description	Size/Shape	Shell Color	Carton Count
202*	Astaxanthin 4 mg	7.5 Oval	Clear	10,000
203	Astaxanthin 6 mg	7.5 Oval	Clear	10,000
210	Beta Carotene 6 mg (10,000 IU Vitamin A)	3 Oval	Clear	20,000
220	Beta Carotene 15 mg (25,000 IU Vitamin A)	3 Oval	Clear	20,000
249	Betatene® (25,000 IU Vitamin A)	7.5 Oval	Clear	9,000
808	Black Cumin Seed 500 mg	10 Oval	Clear	8,000
801*	Black Currant Seed Oil 500 mg	10 Oval	Clear	7,000
815	Borage Oil 1,000 mg	20 Oblong	Clear	4,000
291	Brainberry® OptiBlend	5 Oval	Dark Red	10,000
120	Cod Liver Oil (Vit A 1,250 IU/Vit D <sub>3</sub> 135 IU)	7.5 Oval	Clear	10,000
922*	CoQ <sub>10</sub> 60 mg in Soybean Oil	7.5 Oval	Annatto	10,000
934*	CoQ <sub>10</sub> 200 mg in Soybean Oil	12 Oval	Annatto	7,000
951	CoQ <sub>10</sub> 300 mg in Soybean Oil	16 Oblong	Annatto	5,000
952*	CoQ <sub>10</sub> 400 mg in Soybean Oil	20 Oblong	Annatto	4,000
970	CoQH-CF™ 50 mg (Ubiquinol)	5 Oval	Caramel	10,000
975	CoQH-CF™ 100 mg (Ubiquinol)	10 Oval	Caramel	8,000
920	CoQsol® 60 mg	7.5 Oval	Annatto	8,000
930	CoQsol® 100 mg	10 Oval	Annatto	7,000
950*	CoQsol® 200 mg	12 Oval	Annatto	7,000
960*	CoQsol-CF® 30 mg	5 Oval	Orange	10,000
961*	CoQsol-CF® 60 mg	6 Oval	Orange	8,000
964	CoQsol-CF® 100 mg Translucent	10 Oval	Rose Brown	10,000
966	CoQsol-CF® 300 mg Translucent	20 Oblong	Rose Brown	3,000
967*	CoQsol-CF® 400 mg Translucent	24 Oblong	Rose Brown	3,000

\*Subject to minimum order requirement.

© 2024 Soft Gel Technologies, Inc.





**SOFT GEL**  
TECHNOLOGIES, INC

## Product List

CC # Product Code	Product Description	Size/Shape	Shell Color	Carton Count
500*	DHA 135 mg	6 Oval	Clear	13,000
506*	DHA 200 mg ( <i>life'sDHA</i> ® Algal Oil)	12 Oval	Gold	7,000
824*	Essential Fatty Acids Complex (200 mg each Borage, EPO, Fish Oil, Flax )	16 Oblong	Clear	5,000
823	Essential Fatty Acids Complex (400 mg each Borage, Fish Oil, Flax)	24 Oblong	Clear	3,000
820	Evening Primrose Oil 500 mg	10 Oval	Clear	8,000
822*	Evening Primrose Oil 1,300 mg	24 Oblong	Clear	3,000
290*	Eye Support (FloraGlo® Lutein 10 mg with OptiSharp™ Zeaxanthin 2 mg)	7.5	Clear	12,000
528*	EZ Mega3™ (Odorless Fish Oil) 220 mg EPA/160 mg DHA	12 Oval	Clear	7,000
534*	EZ Mega Max 1,000 mg EE (450 mg EPA/340 mg DHA)	20 oblong	clear	4,000
447	Femalgen® (Go-Less® Pumpkin Seed Extract with Soy Isoflavones)	16 Oblong	Annatto	5,000
527	Fish Oil 1,200 mg EE (360 mg EPA/240 mg DHA)	24 Oblong	Clear	4,000
830	Flaxseed Oil (Organic) 1,000 mg	20 Oblong	Carob	4,000
310	Garlic Oil 1,000 mg	4 Oval	Clear	20,000
364	GlucoFit® 0.240 mg corosolic acid	10 Oval	Carob	7,000
355*	GlucoFit® 0.480 mg corosolic acid	10 Oval	Carob	7,000
123	Injuv® (Hyaluronic Acid Complex)	6 Oval	White	10,000
556	Krill Oil 500 mg (Superba™ Boost)	10 Oval	Clear	5,000
557	Krill Oil 1,000 mg (Superba™ 2)	20 Oblong	Clear	4,000
769	Lactase Enzyme 125 mg	5 Oval	White	13,000
412	Lecithin (Triple Strength 35%) 411 mg Phosphatidylcholine	7.5 Oval	Clear	8,000

\*Subject to minimum order requirement.

© 2024 Soft Gel Technologies, Inc.



## Product List

CC # Product Code	Product Description	Size/Shape	Shell Color	Carton Count
281*	Lutein 6 mg (FloraGLO®)	3 Oval	Clear	15,000
284	Lutein 20 mg (FloraGLO®)	6 Oval	Clear	11,000
259*	Lycopene (Lyc-O-Mato®) 5 mg	3 Oval	Clear	20,000
261	Lycopene (Lyc-O-Mato®) 10 mg	7.5 Oval	Clear	10,000
262*	Lycopene (Lyc-O-Mato®) 15 mg (w/MCT)	10 Oval	Clear	7,000
256*	Lycopene (Lyc-O-Mato®) 20 mg	12 Oval	Clear	5,000
890*	Nattokinase 50 mg	7.5 Oval	Yellow	10,000
420*	Phosphatidylcholine 385 mg	24 Oblong	Clear	2,000
431*	Phosphatidylserine 100 mg (SerinAid®)	12 Oval	Clear	8,000
432*	Phosphatidylserine 100 mg (Sharp PS™ Soy Free)	12 Oval	Clear	7,000
433	Phosphatidylserine 100 mg (Smart PS™)	12 Oval	Clear	8,000
835*	Pumpkin Seed Oil 1,000 mg	20 Oblong	Clear	4,000
540	Salmon Oil 1,000 mg	20 Oblong	Clear	4,000
845*	Saw Palmetto 60 mg with Pygeum, Lycopene and Pumpkin Seed Oil	6 Oval	Carob	10,000
840	Saw Palmetto 160 mg w/160 mg Olive Oil	6 Oval	Clear	10,000
839*	Saw Palmetto 160 mg w/160 mg Pumpkin Seed Oil	6 Oval	Carob	10,000
842	Saw Palmetto 320 mg	6 Oval	Clear	13,000
550*	Squalene (99%) 1,000 mg	20 Oblong	Clear	4,000
265	Sunflower Vitamin E (d-alpha tocopheryl) 400 IU	10 Oval	Clear	8,000
266	Sunflower Vitamin E (d-alpha tocopheryl) 1,000 IU	20 Oblong	Clear	4,000
560*	Sytrinol® 150 mg	7.5 Oval	Green	8,000

\*Subject to minimum order requirement.

© 2024 Soft Gel Technologies, Inc.



**SOFT GEL**  
TECHNOLOGIES, INC

## Product List

CC # Product Code	Product Description	Size/Shape	Shell Color	Carton Count
608*	Tocotrienols (from rice) 35 mg	4 Oval	Clear	15,000
100	Vitamin A 10,000 IU (Fish Liver Oil)	3 Oval	Clear	20,000
110	Vitamin A 10,000 IU w/Vitamin D <sub>3</sub> 400 IU (Fish Liver Oil)	3 Oval	Clear	20,000
112	Vitamin A 25,000 IU (Fish Liver Oil)	5 Oval	Clear	15,000
115	Vitamin A 25,000 IU w/Vitamin D <sub>3</sub> 1,000 IU (Fish Liver Oil)	4 Oval	Clear	20,000
126*	Vitamin D <sub>3</sub> 400 IU (Fish Liver Oil)	3 Oval	Clear	20,000
127*	Vitamin D <sub>3</sub> 1,000 IU (Fish Liver Oil)	10 Oval	Clear	8,000
128	Vitamin D <sub>3</sub> 5,000 IU	7.5 Oval	Clear	10,000
275*	Vitamin E 400 IU (d-alpha tocopherol)	7.5 Oval	Clear	9,000
279*	Vitamin E 1,000 IU (d-alpha tocopherol)	20 Oblong	Clear	4,000
251*	Vitamin E 200 IU (synthetic d, l-alpha tocopheryl acetate)	4 Oval	Clear	15,000
269*	Vitamin E 400 IU (d-alpha tocopheryl acetate)	7.5 Oval	Clear	8,000
253*	Vitamin E 400 IU (synthetic dl-alpha tocopheryl acetate)	7.5 Oval	Clear	8,000
278*	Vitamin E 1,000 IU (d-alpha tocopheryl acetate)	20 Oblong	Clear	4,000
255*	Vitamin E 1,000 IU (synthetic dl-alpha tocopheryl acetate)	20 Oblong	Clear	4,000
274*	Vitamin E 200 IU (d-alpha tocopherol w/mixed tocopherols)	6 Oval	Clear	10,000
273	Vitamin E 400 IU (d-alpha tocopherol w/mixed tocopherols)	7.5 Oval	Clear	8,000
272	Vitamin E 1,000 IU (d-alpha tocopherol w/mixed tocopherols)	20 Oblong	Clear	4,000
267	Vitamin E 400 IU (d-alpha tocopherol w/67 mg non-alpha tocopherols)	10 Oval	Clear	8,000
268	Vitamin E 400 IU (d-alpha tocopherol) Selenium 100 mcg	10 Oval	Carob	8,000

\*Subject to minimum order requirement.

© 2024 Soft Gel Technologies, Inc.



**SOFT GEL**  
TECHNOLOGIES, INC

## QUALITY CERTIFICATIONS:



Delivering custom and branded  
softgels, naturally™



We make softgels, and we strive to make them better than anyone else does! Custom and stock formulas. Solvent-free. In a GMP-certified U.S. Facility. With transparency and worldwide service. For over 20 years.

When you choose us as your softgel contract manufacturer, you get an entire team who is devoted to delivering a problem-free experience and product.

Choose uncompromising quality. Choose Soft Gel Technologies. Contact us today and let us assist you with your next project from concept to completion.

Sales Inquiries: [sales@soft-gel.com](mailto:sales@soft-gel.com)  
Soft Gel Technologies, Inc.®  
6982 Bandini Blvd., Los Angeles, CA 90040  
Toll Free: (800) 360-SGT1 (7484) Phone: (323) 726-0700  
[www.soft-gel.com](http://www.soft-gel.com)



SGTI\_10012024\_PDF